

user manual

HERO



Table of contents

1	GENERAL INFORMATION	4
1.1	Preface	4
1.2	Intended use and indications	4
1.	Notes	5
1.	Declaration of conformity	5
1.5	Warranty conditions	5
1.6	Service and repairs	6
1.7	Training in use	6
1.	Approval/compatibility with standard child car seats	6
2	SAFETY & INSTALLATION IN THE VEHICLE	7
2.1	Get to know the HERO-XL	7
2	Safety instructions	9
2.	Use in the vehicle	10
2.	Lower mounting points	10
2.	Attaching the tension belts	11
2.	Installation in the vehicle	13
3	HANDLING THE BASIC MODEL	15
3.	Fasten the child	15
3	Adjusting the headrest	19
3.	Removing from the vehicle	20
3.	Care & maintenance	21
4	USE OF OPTIONAL ACCESSORIES	22

Table of contents

4	Chest pads	22
4.2	Abduction wedge	22
4.3	Seat depth adapter	23
4.	Support and safety pads	23
5	WARRANTY	24
6	MARKING	25
7	TECHNICAL	26

1 General information

1 General information

1.1 Preface

You have chosen the "HERO-XL" car seat and are now the owner of a high-quality product from our company. We would like to thank you for the trust you have placed in us.

We have provided this manual to ensure that you enjoy this product for many years to come and that it helps to make your everyday life easier. It shows you how to use the product correctly and easily and how to care for and maintain it. To avoid damage due to operating errors and to ensure optimal use, please read the following instructions and information carefully. If you have any further questions or problems, please contact your specialist dealer. We wish you trouble-free use and hope that our products meet your expectations.

We reserve the right to make technical changes to the model described in this operating manual.

Before installing the device in your car and using it for the first time, please read and observe the installation instructions on pages 7–15.

Please ensure that the operating instructions remain with the product so that they are available to all users.

Your HERNIK GmbH

1.2 Intended use and indication

The HERO-XL was developed for transporting children with special needs (GMFCS 3-5; for example, severe muscular hypotonia with lack of head and trunk control) in motor vehicles. Children with poor head and trunk control (e.g., cerebral palsy, muscular dystrophy, hypotonia, motor development disorder) can be supported in their posture by the seat angle adjustment and special padding included in the basic equipment, ensuring safe transport.

Important optional accessories can be used to address specific aspects, such as the installation of a stable abduction wedge, chest pads, seat depth adapters, or support and safety padding.

For more information, see the chapter "4.3."

1 General information

1.3 Notes

The HERO-XL disabled child car seat consists of:

1. A standard child car seat from Axkid (please refer to the manufacturer's instructions for use).
2. An adjustment module with accessories that allows the car seat to be equipped according to your child's individual needs. Please refer to the instructions for use provided by HERNIK GmbH.

1.4 Declaration of conformity

HERNIK GmbH declares under its sole responsibility that the "HERO-XL" child car seat complies with the essential requirements (Annex 1 of Directive 93/42 EEC). The product is marked with the CE mark in accordance with the above-mentioned directive.

1.5 Warranty conditions

A warranty can only be provided if the product is used under the specified conditions and for the intended purposes. The manufacturer is not liable for damage caused by components and spare parts that have not been approved by the manufacturer.

1 General information

1.6 Service and repairs

Service and repairs on the HERO-XL may only be carried out by specialist dealers. If you encounter any problems, please contact your specialist dealer. They will provide you with original replacement parts for repairs.

1.7 Training

The car seat is delivered fully assembled. Upon delivery, the specialist dealer will instruct the user in the use of the device with the aid of the instruction manual. The specialist dealer should install the car seat in the car together with the user. In order to achieve an optimal seating position, it is necessary to adjust the car seat individually to the child's circumstances. This should always be done by the specialist dealer.

1.8 Approval/compatibility with standard car seats

The HERO-XL, including all accessories, is an approved child car seat in accordance with ECE R129/03. Individual parts and accessories of the HERO-XL are not approved for use in combination with other commercially available child car seats. Any modification could invalidate the approval of the HERO-XL as well as that of the commercially available child car seat.

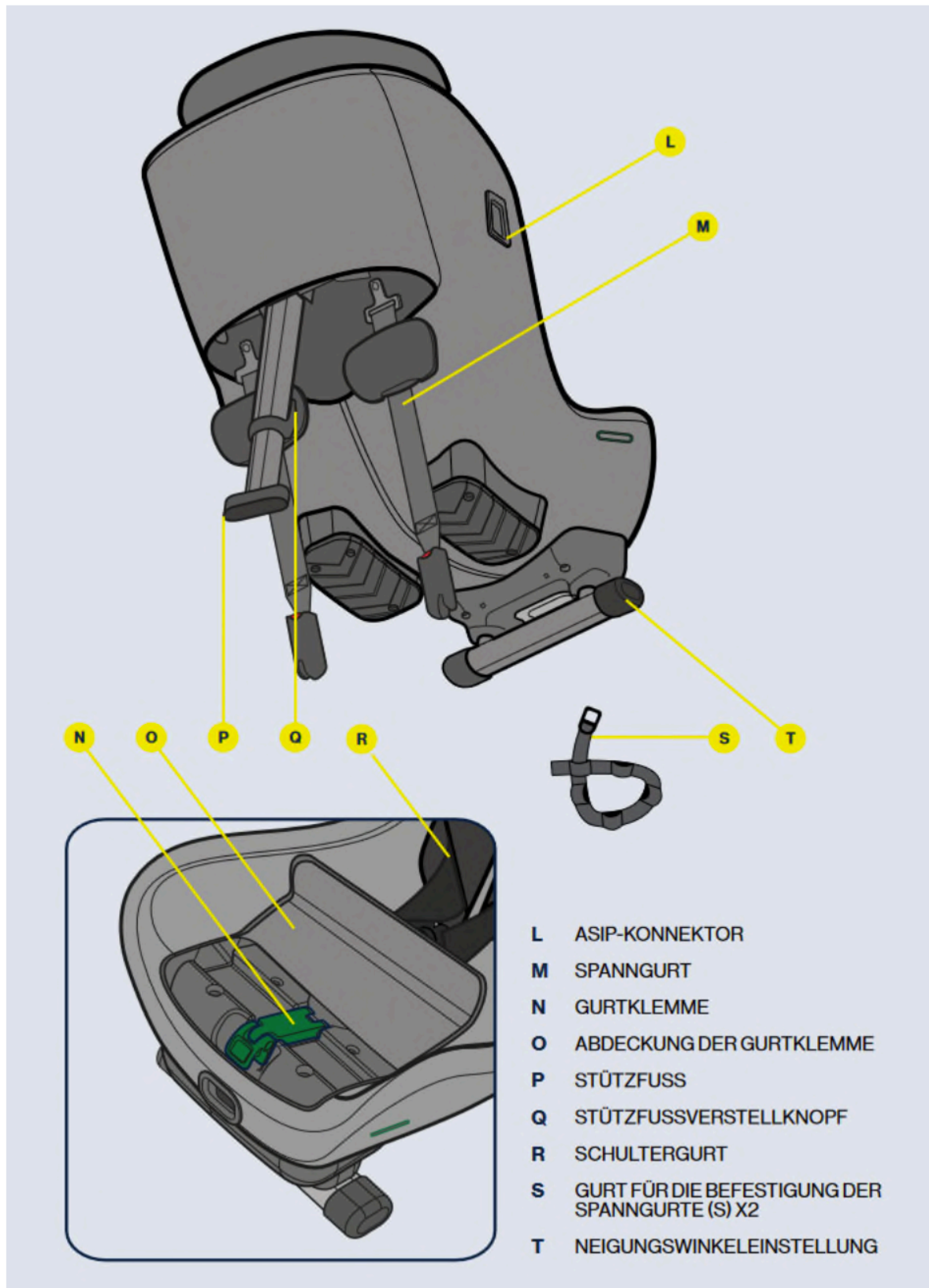
2e safety & installation in the car

2 e safety & installation in the car

2.1 Get to know the HERO-XL



2e safety & installation in the car



2e safety & installation in the car

2.2 Safety

The HERO-XL must always be secured in the vehicle in accordance with the installation instructions, even when not in use. An unsecured seat can injure other car occupants in an emergency braking maneuver.

- The HERO-XL must be secured in the car so that it cannot be trapped by the front seats or the vehicle doors.
- The belts must not be twisted or pinched and must be tightened.
- The car seat must not be used again after an accident.
- Always fasten your child's seat belt.
- Before each journey, check that the belt buckle is correctly locked and that the base is correctly positioned.
- Also make sure that all fixed objects and plastic parts of the HERO-XL are positioned so that they cannot be trapped by a moving seat or in a door during normal use of the vehicle.
- It is recommended that luggage or other items be secured properly.
- The car seat must not be used without the cover.
- Please note that the car seat may become too hot for your child's skin if it is left in the sun for long periods of time without the fabric cover.
- The cover may only be replaced with the original cover from HERNIK.
- Do not leave your child unattended in the car seat.
- Please do not make any changes or additions to the device.
- Please follow the installation instructions provided by HERNIK exactly.
- The instructions for use should always be kept in the vehicle.

2e safety & installation in the car

2.3 Use in the vehicle

The HERO-XL rehabilitation car seat for children must only be installed facing rearward. It fits most, but not all, seats. Please refer to your vehicle's operating instructions for information on which seats are approved for use with child restraint systems in accordance with ECE R16.

Possible uses for the HERO-XL (i-SIZE):

Beifahrersitz (kein aktiver Airbag)	JA/NEIN*
Beifahrersitz (aktiver Airbag)	NEIN
Rücksitz mit Dreipunkt-Sicherheitsgurt	JA
Sitz mit Zweipunkt-Sicherheitsgurt	NEIN
Seit- und rückwärtsgerichtete Sitze	NEIN



IMPORTANT! If you wish to install your HERO-XL child seat on a seat with a front airbag, the airbag must be deactivated in accordance with the vehicle manufacturer's instructions. Please note that in some vehicles, the airbag can only be deactivated by an authorized service center.

2.4 Lower attachment points

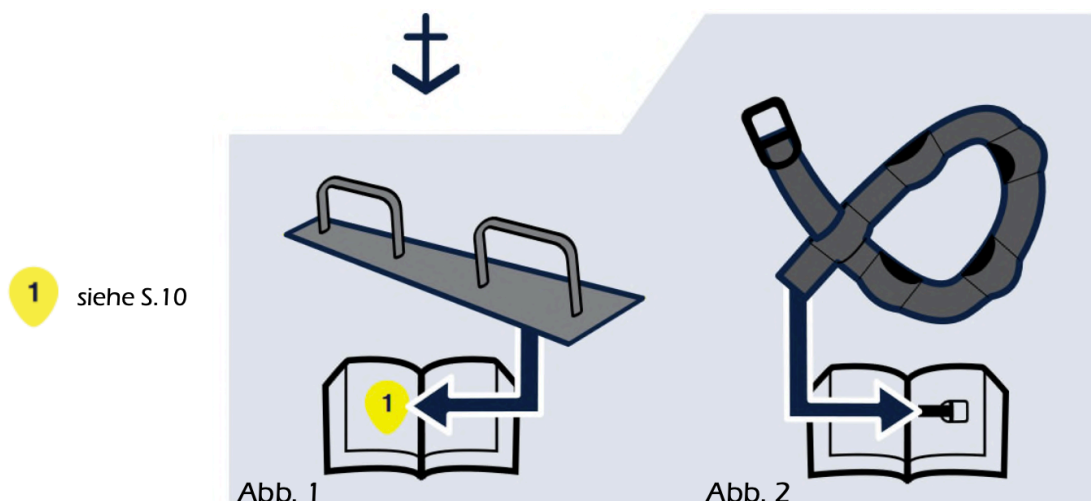
Forward-facing tension straps are used to improve the protection of children in cars by enabling a firm and stable installation for belted, rear-facing child seats. This attachment increases your child's safety in all types of collisions, including rollovers and rear-end collisions.

The tension straps ensure a precise and easy installation in vehicles with pre-installed lower mounting points. Pre-installed lower mounting points in vehicles are often located on the seat rails attached to the floor, but other positions are also possible. For more information on suitable mounting points, please refer to your vehicle's owner's manual. If your vehicle does not have lower mounting points, you can use the additional lower mounting straps (S) included with the HERO-XL. The installation instructions can be found in this manual.

IMPORTANT! Never use the HERO-XL without the tension straps at the front. They are an important safety feature and must always be used when installing your child seat.

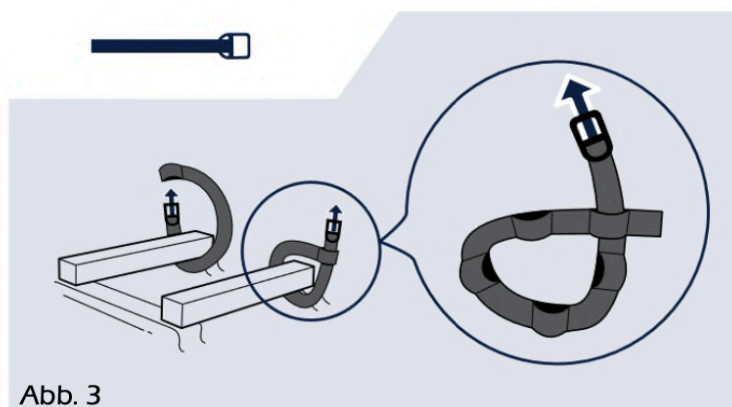
2e safety & installation in the car

2.5 Attaching the tension straps



If your vehicle does not have suitable pre-installed lower mounting points (Fig. 1), you can use the straps for lower mounting included with the HERO-XL (Fig. 2). Depending on your vehicle and the seat position in which you want to install your child seat, there are various possible attachment points for attaching the straps (see next page):

To install the lower attachment straps (S), simply wrap the strap around the selected attachment point and thread the metal anchor through one of the slots on the strap (Fig. 3). The attachment strap has several slots that can be used. Be sure to use the slot closest to the metal anchor to install the metal anchor as close to the vehicle floor as possible. Then pull on the metal anchor to tighten the strap and repeat the process for the other strap. When installing the HERO-XL, always use two mounting points that are separated from each other, as this will ensure a more stable installation.



Options for routing the mounting strap:

2e safety & installation in the car

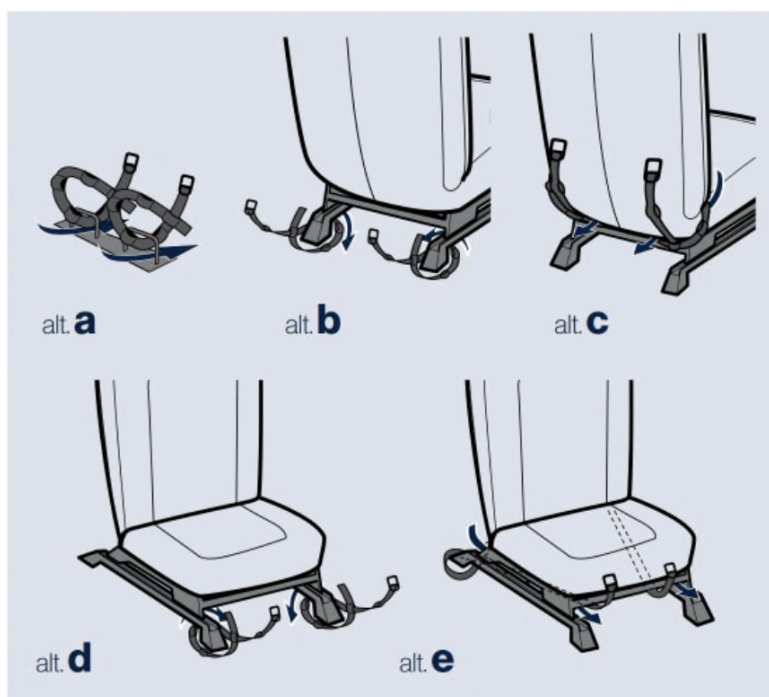
Option a) Route the strap around the edge of the pre-installed mounting point (only use this method if the pre-installed mounting points do not fit directly with the lower retaining straps).

alt. b) Attach the strap around the seat rail in front of the child seat by passing the strap between the seat rail and the vehicle floor or through a suitable hole in the seat rail.

alt. c) Attach the strap around the seat joint of the vehicle seat in front of the child seat by passing the strap between the backrest of the vehicle seat and the seat cushion.

alt. d) Attach the belt around the seat rail under the child seat by passing the belt between the seat rail and the vehicle floor or through a suitable hole in the seat rail.

alt. e) If the HERO-XL is mounted on a passenger seat and none of the above alternatives are possible, you can attach the straps for the lower attachment to a suitable attachment point in the rear of the vehicle and route the straps under the vehicle seat to the front of the vehicle. Make sure that the fastening straps are visible at the front of the seat and not at the sides.

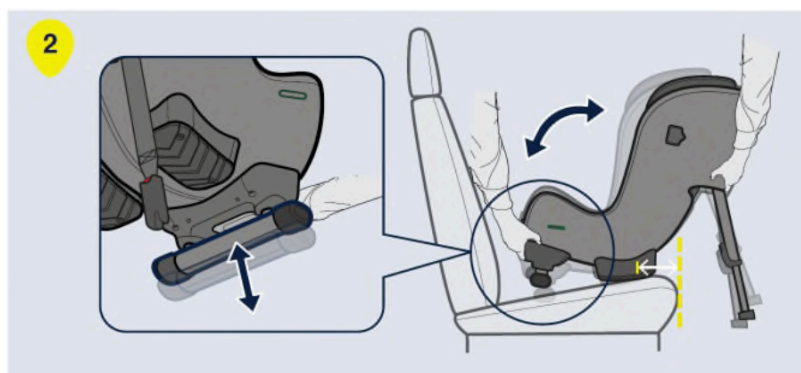


2e safety & installation in the car

2.6 Installation in the vehicle

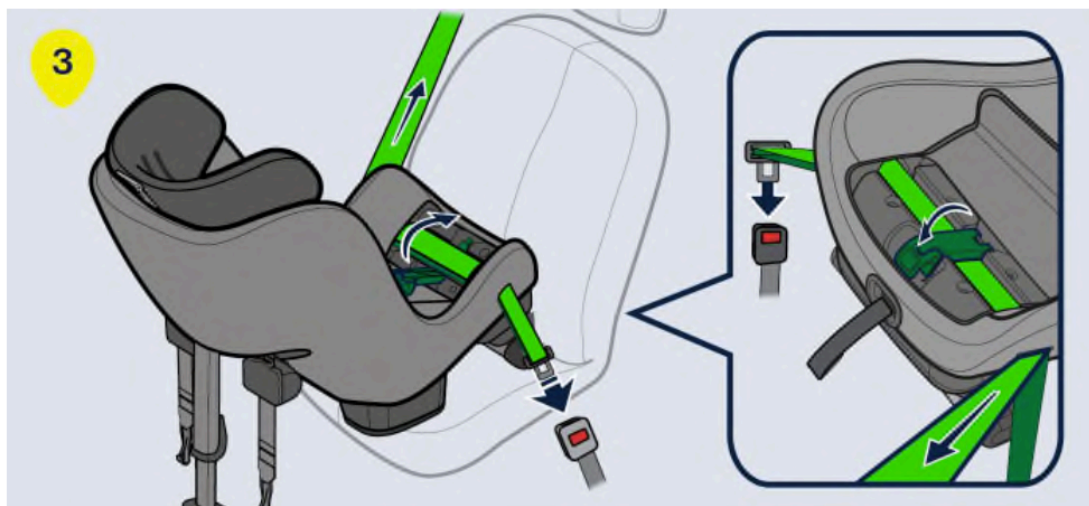
- 1) Open the zipper and open the cover of the belt clamp (O).
- 2) Place the HERO-XL on the vehicle seat with the back of the child seat facing the front of the vehicle. Adjust the legroom for your child by simply moving the child seat forward and backward on the vehicle seat. The HERO-XL can be installed close to the vehicle seat backrest, but must never be installed in such a way that the heel (J) hangs over the edge of the vehicle seat. Make sure that the vertical line (K) on the heel (J) never crosses the edge of the vehicle seat.

Adjust the seat angle of the child seat by pressing the tilt angle adjustment lever (G) and selecting a suitable seat angle position. For maximum safety, select the most upright position possible while ensuring that your child's head does not fall forward when sleeping. For comfort and safety reasons, the tilt angle should be adjusted to a more upright position as your child grows. Please note that the child seat will tilt back slightly when the tension straps (M) are tightened, as it will sink into the padding of the vehicle seat. When installing the HERO-XL on a front passenger seat, it is possible but not necessary for the back of the child seat to come into contact with the dashboard.

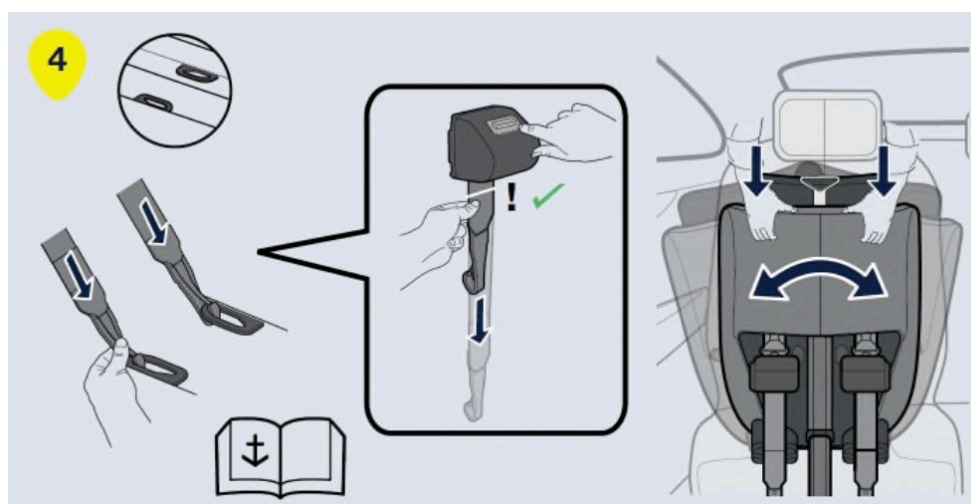


- 3) Open the belt clip (N). Pull out an arm's length of the vehicle belt and thread it through the seat belt slot (D) closest to you. Thread the belt through the belt clip (N) and then through the seat belt slot (D) on the opposite side. Fasten the vehicle seat belt using the buckle and pull firmly on the shoulder section of the vehicle seat belt to ensure that it is tight and the child seat is securely fastened. The harder you pull, the tighter the installation. Once the child seat is securely fastened, close the belt clip (N) and lock the vehicle seat belt in position. Ensure that both the shoulder and lap belts are locked together in the belt clip (N). Close the belt clip cover (O) and close the zipper. To achieve an even tighter and more stable fit, press down on the child seat while pulling on the shoulder section of the seat belt.

2e safety & installation in the car



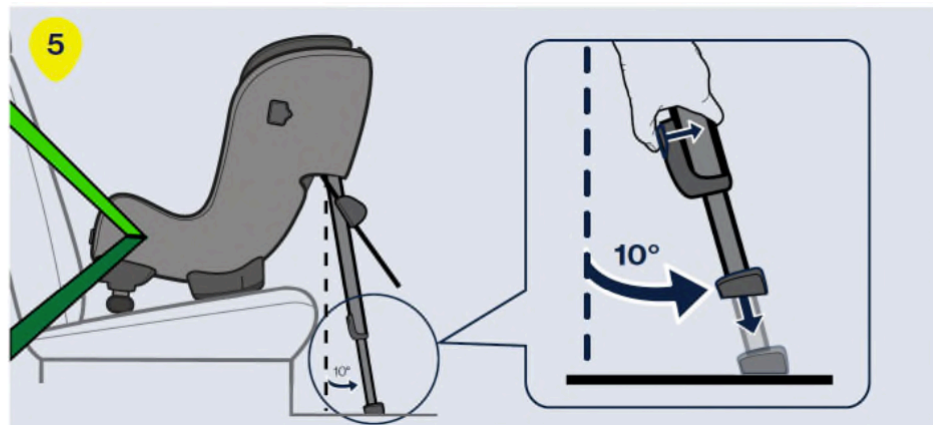
4) Pull the tension straps (M) out of the child seat and connect them to the lower mounting points in your vehicle. For more information, see the section "Lower mounting points" on page 10 in this manual. Press down on the top of the child seat and rock the child seat side to side. The self-tensioning straps (M) of the HERO-XL will then automatically tighten. By tightening the straps (M), you also adjust the final angle of the child seat. Press down on the child seat until it is securely fastened and you have achieved a suitable seat angle. Check that the white mark on the lower strap is visible. If not, the lower mounting points are too close to the child seat and must be adjusted. If this is not possible, you can also cross the tension straps behind the seat to gain a little more space.



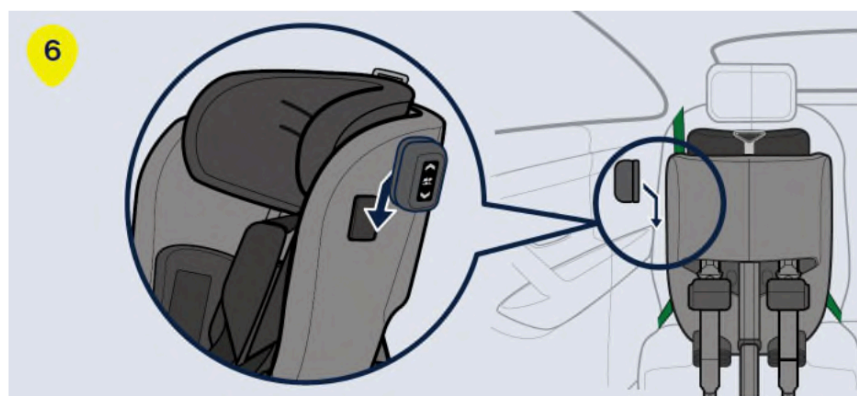
5) Pull the support leg (P) out of the child seat. Press the support leg button (O) and pull the support leg (P) down until it touches the vehicle floor. Release the support leg button (O) and lift the child seat upwards to extend the support leg (P) further until you hear a click. The

3 Handling the basic model

support leg (P) should now be locked and pressed firmly against the vehicle floor. Make sure that the support leg (P) is tilted approx. 10° towards the front of the vehicle. Check again that the vehicle's seat belt is still tight and that the lap belt has not become loose when tightening the lower support straps and the support leg. If the vehicle seat belt has lost some tension, simply tighten it again by repeating step 2 of these instructions without loosening the tension straps.



6) Slide the ASIP (I) into the slots on the ASIP connector (L) and push it down until the ASIP (I) clicks into place. If there is a plastic cover on the ASIP connector (L), remove it and place it on the ASIP connector (L) on the opposite side of the seat before attaching the ASIP (I). Make sure that the ASIP (I) is attached to the side of the HERO-XL child seat closest to the vehicle door.



3 Handling the basic model

3.1 Securing the child

Before strapping your child into the HERO-XL child seat, make sure that the correct insert is in the seat. The HERO-XL is designed to grow with your child and ensure a comfortable and safe fit for children. We recommend using the insert until it becomes too small for your child.

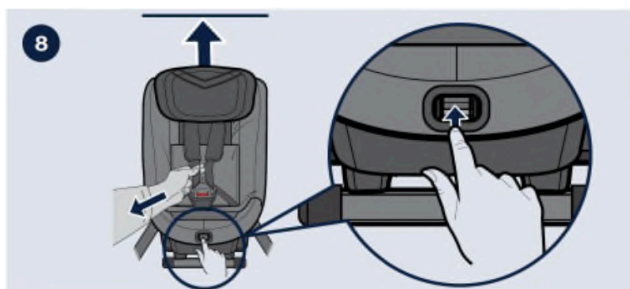
3 Handling the basic model

The HERO-XL is equipped with an automatic headrest (A) that automatically lowers to the correct position when the integrated safety belt is fastened. To ensure the optimal position, HERNIK recommends using this feature every time you secure your child. Before placing your child in the child seat, make sure that the automatic headrest (A) is in the unlocked position.

7) Make sure that the headrest brake lever (H) is in the unlocked position. If the lever is in the locked position, push it to the unlocked position.

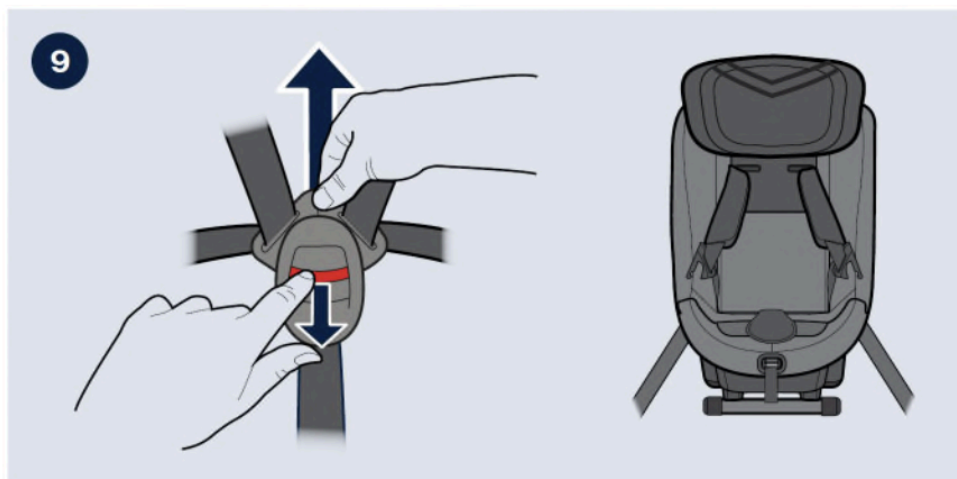


8) Release the integrated safety belt by pressing the belt release button (E) and pulling both shoulder belts (R) out at the same time. Avoid pulling on only one strap, as this may cause the shoulder straps (R) to become uneven. Make sure that the headrest (A) is in the uppermost position:

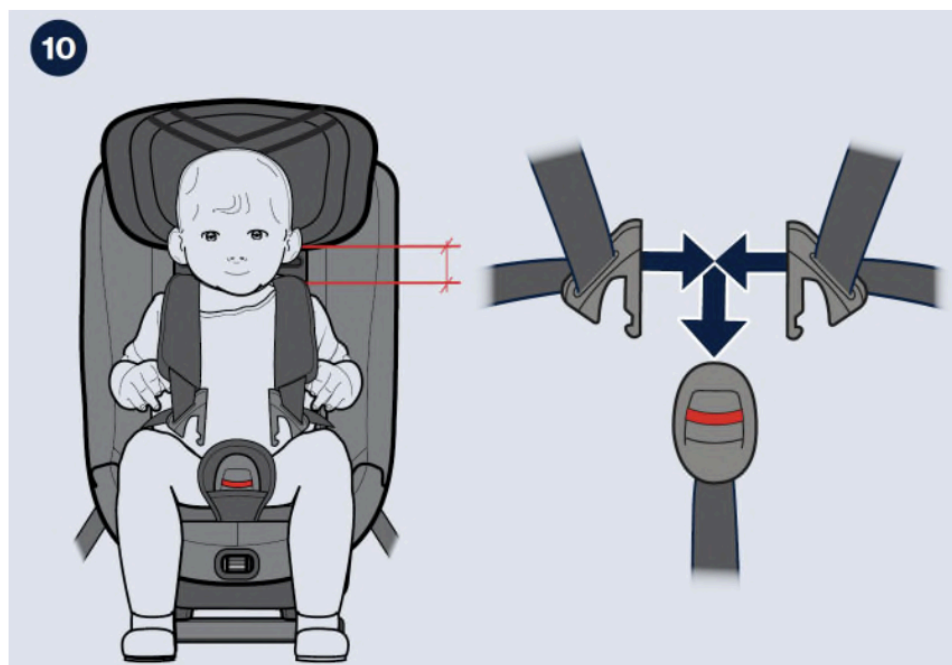


3 Handling the basic model

9) Unlock the belt buckle by pressing the buckle release button (C) and place the belts outside the seat.

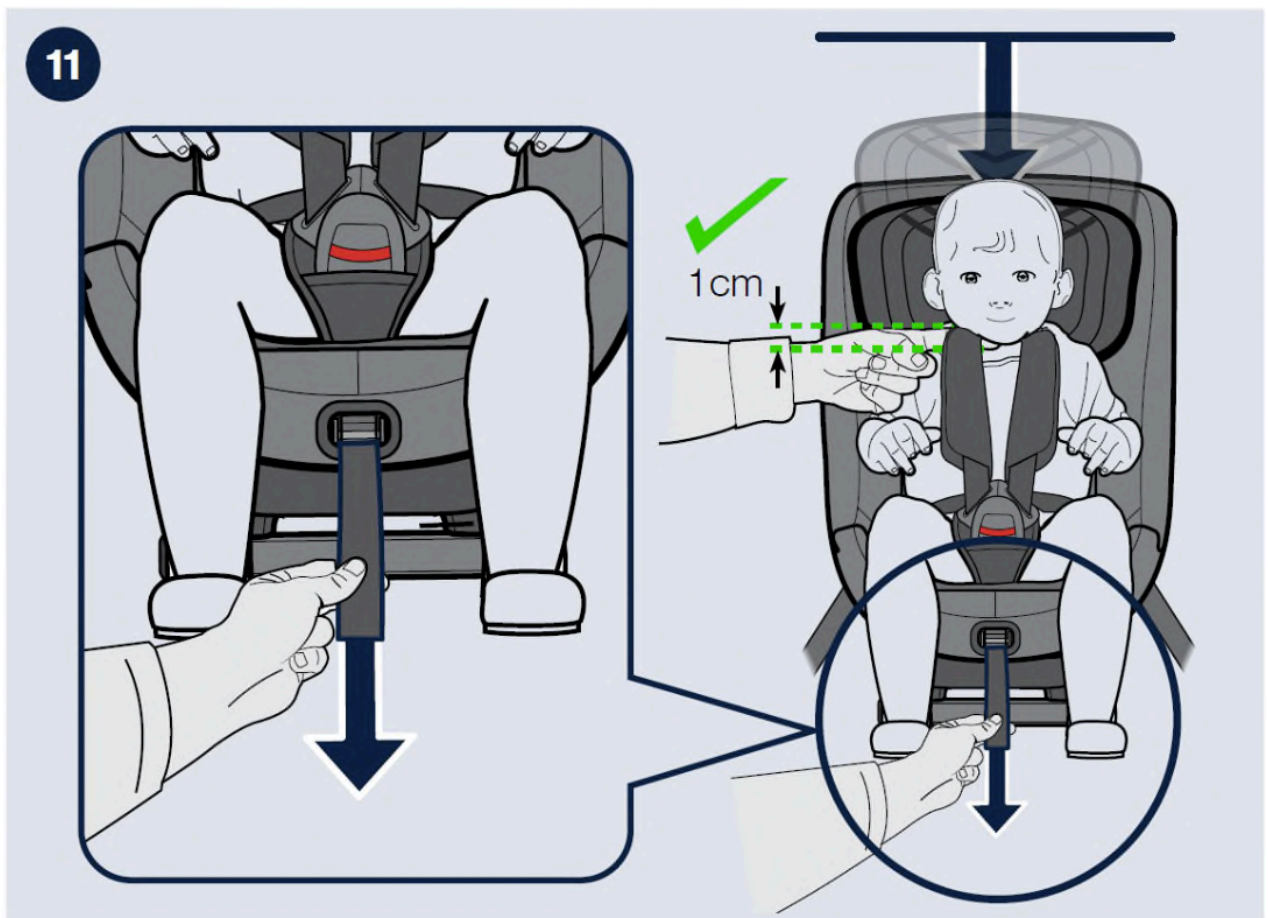


10) Place your child in the seat and place the shoulder straps (R) over your child's shoulders. Lock the integrated safety belt by first bringing together the parts of the lock that are attached to the shoulder straps (R) and then pushing them into the lock until you hear a click.



3 Handling the basic model

11) Pull on the shoulder straps (R) to tighten the integrated safety belt across your child's hips. While keeping the shoulder straps (R) taut, pull the belt tensioner (F) straight away from the child seat until the belt is tight enough. There should be no more than a finger's width between the shoulder straps (R) and your child's shoulders. When you tighten the belt, the headrest (A) will automatically move down to the position that is suitable for your child.



3 Handling the basic model

3.2 Adjusting the headrest

The HERO-XL is equipped with an automatic headrest (A) that ensures that the headrest (A) is always in the optimal position for your child. When the integrated safety belt is tightened, the headrest (A) lowers to the correct height and locks automatically. When the belt is released, the headrest (A) moves back to its uppermost position and is unlocked. To ensure the optimal position, we recommend using this function every time you strap your child in.

The headrest (A) is only unlocked in its uppermost position. Therefore, make sure that the headrest (A) returns completely to its uppermost position when you loosen the integrated safety belt, as otherwise the headrest (A) will remain locked and will not move down when the belt is tightened. If you want to deactivate the automatic adjustment and keep the headrest (A) in a fixed position, move the headrest (A) to the desired position and move the headrest brake lever (H) to the locked position. The headrest (A) is now locked at the appropriate height and will not move until you move the headrest brake lever (H) back to the unlocked position.

If you are using your HERO XL with a fixed headrest (A), make sure that the headrest (A) is in the correct position for your child. Make sure that the shoulder straps (R) run directly across your child's shoulders or a maximum of 1 cm above them through the seat. If not, adjust the headrest (A) by moving the headrest brake lever (H) to the unlocked position and sliding the headrest (A) to the upper position to unlock it, then repeat the process.

NOTE! When the headrest is extended, the backrest pad can be folded out (Fig. 1). Once the height of the headrest has been reduced, the backrest pad must be folded down accordingly (Fig. 2).



Abb. 1

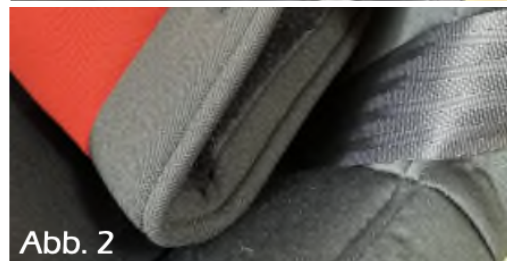
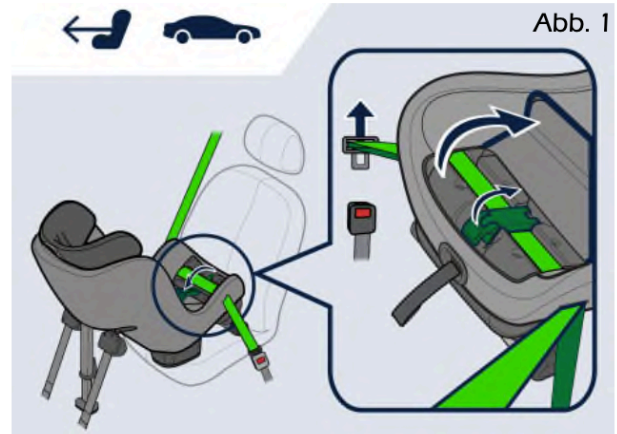


Abb. 2

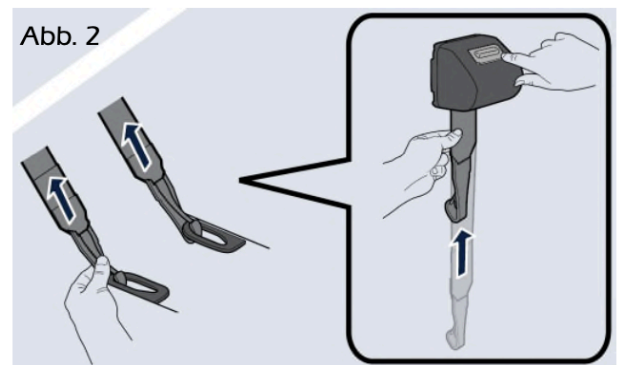
3 Handling the basic model

3.3 Removal from the vehicle

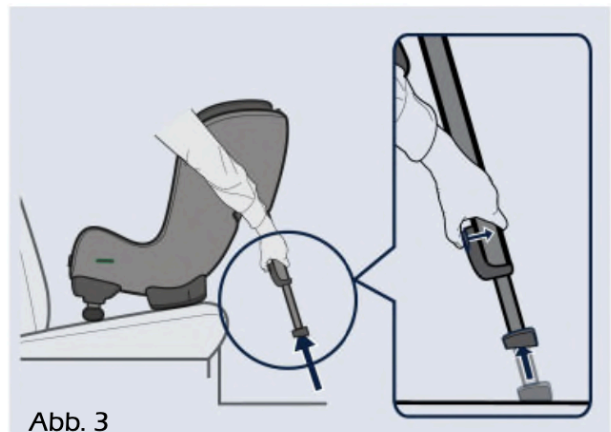
1) Open the zipper and open the cover of the belt clip (O). Unlock the vehicle seat belt by pressing the red button on the seat belt buckle. Open the belt clip (N) and pull the vehicle seat belt through the belt slots (D) to remove it from the child seat (Fig. 1).



2) Unlock the lower restraint straps (M) by holding the connectors firmly with your hand and pressing the red button with your thumb. Continue to hold the connector in your hand and slowly guide it back to the child seat. Be careful not to let go of the lower restraint strap connector, as it will retract automatically at high speed (Fig. 2).



3) Press the support leg button (Q) and move the support leg (P) to its shortest position (Fig. 3).



3 Handling the basic model

4) Press the seat angle adjustment lever (G) and push the seat angle adjuster (T) to the shortest position. Lift the HERO-XL out of the vehicle.

TIP! Lock the belt buckle and tighten the harness before removing the child seat from the vehicle. You can then use the shoulder straps (R) as a carrying handle to lift the child seat out more easily and transport it outside the vehicle.

IMPORTANT! Never carry the child seat by the headrest (A).

3.4 Care & maintenance

General care and maintenance instructions

To ensure the full protective effect of the child seat:

- In the event of an accident with an impact speed of more than 10 km/h, the child seat may be damaged without the damage being immediately apparent. In this case, the child seat must be replaced. Please dispose of it properly.
- Check all important parts regularly for damage. Make sure that all mechanical components in particular are in perfect working order.
- To avoid damage, make sure that the child seat is not trapped between hard objects (car door, seat rails, etc.).
- Always have the child seat checked if it has been damaged (e.g., if it has fallen to the floor).
- Never lubricate or oil any parts of the child seat.
- To ensure that it can protect your child properly, it is essential that you install and use the HERO-XL exactly as described in this user manual.

4 Use of optional accessories

4 Use of optional accessories

4.1 Thorax pads

The chest pads help your child to stabilize their upper body if their trunk control is limited. The pads are attached to a mounting plate using a Velcro fastener. They can be removed with minimal effort. Once you have found the optimal position, the pads should be reattached by pressing them toward the back and turning them slightly. The cover of the thoracic pads is removable and washable.



4.2 Abduction wedge

The abduction wedge helps your child keep their legs in a controlled position. It is attached to a stable mounting frame and can be adjusted in depth and height using quick-release levers. The cover of the abduction wedge is removable and washable.



4 Use of optional accessories

4.3 Seat depth adapter

The seat depth adapter (1) allows the seat depth to be extended by approx. 10 cm. This makes the HERO-XL suitable for larger children.

The seat depth adapter is attached to a stable mounting frame and can be adjusted in depth using a quick-release lever (2).

The cover is removable and washable.



4.4 Support and safety padding

The support and safety padding (1) allows your child to rest their arms and stabilize their upper body.

It can be attached to the back of the seat using two Velcro straps.

The cover is removable and washable.



5Warranty

5 Warranty

HERNIK products are state-of-the-art and manufactured to strict quality standards. In the unlikely event that you have cause for complaint, the company guarantees, in accordance with HERNIK's general terms and conditions, after delivery

- 24 months on all fixed components
- 12 months on all moving parts

No warranty can be given for custom-made products, unless they are due to manufacturing or material defects. In this case, the product will be replaced for 12 months.

Claims under this warranty are subject to the device having been used properly and in accordance with the instructions for use.

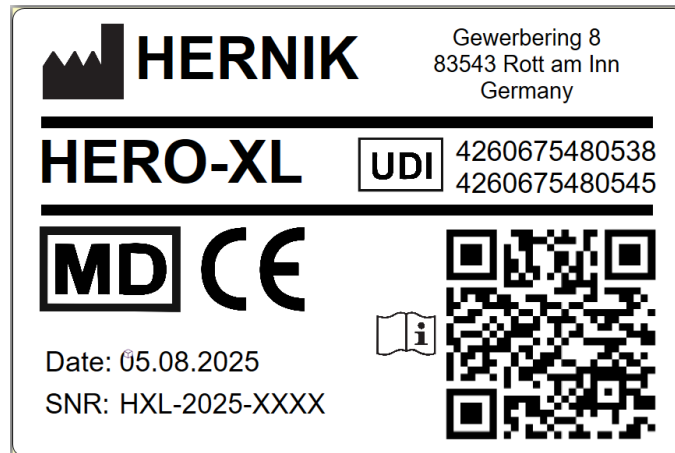
In the event of design modifications, reworking, or improper repairs without prior consultation with the GmbH, the HERNIK warranty claim shall be void.

Further claims, regardless of their legal basis, in particular for compensation for direct or indirect damage, are excluded.

6Marking

6 Marking

The following marking can be found on the back:



**Restraint device for special
requirements "S" (EN)**

Please read the user manual
before use!

7Technical

7 Technical

HERO-XL	
SITZBREITE (Becken)	24 cm
SITZBREITE (Knie)	27 cm
SITZTIEFE	25 - 34 cm
RÜCKENHÖHE	28 - 45 cm
SCHEITELHÖHE	48 - 68 cm
Höhe Thoraxpelotten	13 - 20 cm
Gesamthöhe	65 - 82 cm
Gesamtbreite	43 cm
Gesamttiefe	55 cm
getestete Belastbarkeit	36 kg

notes

notes



HERNIK GmbH
Gewerbering 8
83543 Rott am Inn • Germany

 **+49 8039-9093930** •  **+49 8039-90939319**
 **info@hernik.de** •  **www.hernik.de**

- Seite 13 -