

# user manual

**IPAI** **MAX** **MINI**



# Table of contents

<b>1</b>	<b>GENERAL INFORMATION</b>	<b>4</b>
1.1	Preface	4
1.2	Intended use and indications	5
1.	Notes	5
1.	Declaration of conformity	5
1.5	Warranty conditions	5
1.6	Service and repairs	6
1.7	Training in use	6
1.	Installation in the car	6
1.9	Adjusting the headrest	7
1.10	Securing with the car's 3-point seat belt	8
1.11	Declaration of conformity	10
1.12	Approval/compatibility with commercially available child car seats	11
1.1	Contraindications	11
<b>2</b>	<b>SAFETY</b>	<b>12</b>
<b>3</b>	<b>HANDLING OF THE BASIC MODEL</b>	<b>13</b>
3	Adjusting the 5-point safety harness	13
3	Adjusting the headrest	13
3.	Adjusting the back angle	13
<b>4</b>	<b>USING THE OPTIONAL ACCESSORIES</b>	<b>14</b>
4	Installation in the car - with ISOFIX	14
4.	Support and safety cushions	16

## Table of contents

<b>4</b>	<b>Chest pads</b>	<b>16</b>
<b>4.4</b>	<b>Abduction wedge</b>	<b>17</b>
<b>4.5</b>	<b>Seat angle adjustment</b>	<b>17</b>
<b>4.6</b>	<b>Swivel adapter</b>	<b>18</b>
<b>4.7</b>	<b>Seat depth adapter</b>	<b>19</b>
<b>5</b>	<b>WARRANTY</b>	<b>20</b>
<b>6</b>	<b>MARKING</b>	<b>21</b>
<b>7</b>	<b>MAINTENANCE &amp; CARE</b>	<b>22</b>
<b>7.1</b>	<b>Removing the cover</b>	<b>22</b>
<b>8</b>	<b>TECHNICAL DATA:</b>	<b>23</b>
<b>9</b>	<b>MATERIAL LIST:</b>	<b>24</b>

# 1 General information

## 1 General information

### 1.1 Foreword

You have chosen the IPAI MAX / IPAI MINI car seat and have received a high-quality product from our company. We would like to thank you for the trust you have placed in us.

To ensure that you enjoy this product for many years to come and that it makes your everyday life easier, we have provided these instructions. They show you how to use the product correctly and easily, as well as how to care for and maintain it. To avoid damage caused by operating errors and to ensure optimal use, please read the following instructions carefully. If you have any questions or problems, please contact your dealer.

We wish you trouble-free use and hope that our product meets your expectations.

We reserve the right to make technical changes to the version described in this manual.

Before installing the device in your vehicle and using it for the first time, please read and follow the installation instructions on pages 4–6. Please ensure that the user manual remains with the product so that it is available to anyone who uses the seat.

Your HERNIK GmbH

# 1 General information

## 1.2 Intended use and indication

The IPAI was developed for the transport of children with special needs (GMFCS 3-5; e.g., pronounced muscular hypotonia with lack of head and trunk control) in vehicles. Children with poor head and trunk control (e.g., infantile cerebral palsy, muscular dystrophy, hypotonia) can be supported in their posture by means of individually positionable chest pads and special cushions, ensuring safe transport.

Important optional accessories allow specific aspects to be addressed, such as seat inclination or the installation of a stable abduction wedge or footrest. For more information, see the chapter "4 ."

## 1.3 Notes

The IPAI rehabilitation car seat for children consists of two modules:

1. A standard Kidfix child car seat (ADVENTURE PLUS 2 BR Space Black SB, item no. 2000036852) from Römer-Britax (please refer to the manufacturer's instructions for use).
2. An adjustment module with accessories that allows the car seat to be customized to individual needs. Please refer to the instructions for use provided by HERNIK GmbH.

## 1.4 Declaration of conformity

HERNIK GmbH declares under its sole responsibility that the IPAI child car seat complies with the essential requirements (Annex 1 of Directive 93/42 EEC). The product is marked with the CE mark in accordance with the above-mentioned directive.

## 1.5 warranty conditions

A warranty can only be provided if the product is used under the specified conditions and for the intended purposes. The manufacturer is not liable for damage caused by components and spare parts that have not been approved by the manufacturer.

# 1 General information

## 1.6 Service and repairs

Service and repairs on the IPAI may only be carried out by specialist dealers. If you encounter any problems, please contact your specialist dealer. They will provide you with original replacement parts for repairs.

## 1.7 Training

The car seat is delivered fully assembled. Upon delivery, the specialist dealer will instruct the user in the use of the device with the aid of the operating instructions. The specialist dealer should install the car seat in the car together with the user and adjust the Isofix bracket or clamping bracket, if available.

When installing the car seat, it is best to hold it with one hand in the middle at the front and with the other hand on the side at the top. To achieve the optimal seating position, it is necessary to adjust the car seat individually to the child's characteristics. This should always be done by a specialist dealer.

Please note that an ISOFIX adapter is not required as it is not relevant to safety.

## 1.8 Installation in the car

Place the child seat on the vehicle seat. Make sure that the backrest is flat against the backrest of the vehicle seat.

**Tip!** If the headrest of the vehicle seat is in the way, remove it.

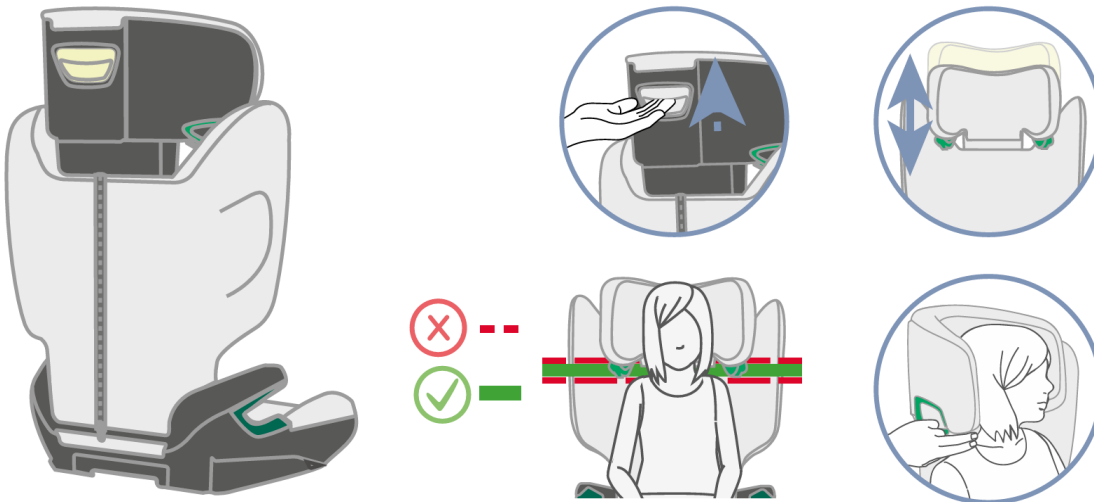


# 1 General information

## 1.9 Adjusting the headrest

A correctly adjusted headrest ensures that the vehicle's diagonal seat belt (3-point belt) is positioned correctly and offers your child maximum protection. The headrest must be adjusted so that there is enough space for two fingers between your child's shoulders and the headrest. You can adjust the height of the headrest to suit your child's height as follows:

1. Grab the adjustment handle on the back of the headrest and pull it up. The headrest is now unlocked.
2. You can now slide the unlocked headrest to the desired height. As soon as you release the adjustment handle, the headrest will lock into place.
3. Place the child seat on the vehicle seat.
4. Place your child in the child seat and check the height. Repeat this process until the headrest is at the correct height.



# 1 General information

## 1.10 Secure with the car's 3-point seat belt

In order to absorb the enormous forces generated in an accident, the IPAI must be secured with the vehicle's three-point seat belt.

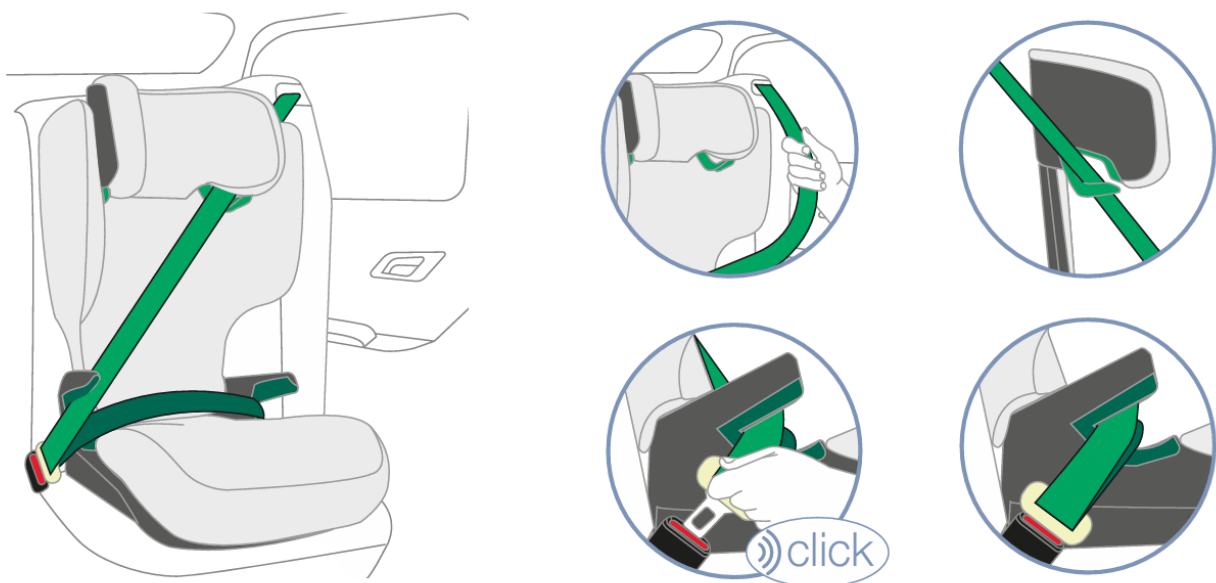
An ISOFIX connection alone is not sufficient.

1. Place your child in the child seat.
2. Pull the vehicle seat belt out and guide it (in front of your child) to the buckle.

**CAUTION!** Make sure that the vehicle seat belt is not twisted, as this will prevent the restraint system from providing full protection.

3. Lock the belt buckle tongue into the vehicle lock with a **CLICK**.
4. Place the diagonal belt and the lap belt on the side of the vehicle lock into the dark green belt guide of the vehicle seat.
5. Place the lap belt on the other side of the seat cushion in the dark green belt guide as well.

**CAUTION!** The lap belt must run as low as possible over your child's hips on both sides.





## 1 General information

6. Insert the diagonal belt into the dark green belt holder on the headrest until it is completely and untwisted in the belt holder.

**Tip!** If the backrest covers the belt holder, you can adjust the headrest (upwards). After inserting the diagonal belt, you can readjust the headrest to the correct height.

7. Make sure that the diagonal belt runs across your child's collarbone and does not touch their neck.

**Tip!** You can also adjust the height of the headrest while the seat is in the car.

Before each journey, check that...

- the child seat is securely fastened,
- the lap belt runs through the dark green belt guides on both sides of the vehicle seat,
- the diagonal belt on the side of the buckle also runs through the dark green belt guide of the car seat,
- the diagonal belt runs through the dark green belt guide of the headrest,
- the diagonal belt runs diagonally to the rear,
- the belts are tight and not twisted.



# 1 General information

## 1.1 Declaration of conformity



Gewerbering 8  
83543 Rott am Inn  
info@hernik.de  
www.hernik.de  
+49 8035-9580448  
+49 8035-9580446

### Declaration of Conformity

**Hersteller:** HERNIK GmbH

**Adresse:** Gewerbering 8  
83543 Rott am Inn  
Germany

**SNR:** DE-MF-000011257

**Produkt:** car seat for children with disabilities

**Typenbezeichnung:** IPAI / IPAI-MAX / IPAI-MINI / IPAI-PRO



UDI-PI	Bezeichnung	Artikelnummer
4260675480064	IPAI- red-Black	550000-E2
4260675480071	IPAI- grey-Black	550000-E2

**Classification Med. Dev.:** this is a medical device of class I according to the classification Rules in Annex VIII

I, the signer, declare under sole responsibility that the above product complies with the essential requirements of the following guidelines and standards (Annex 1 of MDR (EU) 2017/745). The conformity assessment was carried out in accordance with Annex IV of the MDR (EU) 2017/745. The product is marked with the CE mark according to the above-mentioned guideline.

- Annex 1 of MDR (EU) 2017/745
- ECE-R129/04 test standard for child car seats

Rott am Inn, 09.10.2024      Andrés Moncayo



Ort, Datum

Name

Unterschrift

Gewerbering 8  
83543 Rott am Inn  
Deutschland

HBR 125064  
St.-Nr.: 9143 813 37744  
USt-IdNr.: DE201281298

Stadtsparkasse München  
IBAN: DE12 7015 0000 0019 1406 72  
BIC: SSKMDEMM

CEO:  
Markus Jacksch  
Gerichtsstand: München

## 1 General information

### 1.12 Approval/compatibility with standard child car seats

The IPAI is an approved child car seat including all accessories in accordance with ECE R129/03. Individual parts and accessories of the IPAI are not approved for use in combination with other commercially available child car seats. Any modification could invalidate the approval of the IPAI as well as that of the commercially available child car seat.

### 1.13 Contraindications

There are no known contraindications.

## 2Safety

### 2 Safety

- Before use, check that all components are in perfect working order and condition.
- The instructions for use must always be carried in the car seat.
- The safety of your child can only be guaranteed if the seat is installed correctly and the child is securely fastened.
- The belts must be tight and free of twists.
- The 3-point safety belt must be threaded through the belt guides provided and should fit snugly around the seat.
- Please check:
  - A) that the safety belt is securely in the belt guide
  - B) that the belt buckles are properly closed
  - C) that no textiles are trapped
- Make sure that there are no solid objects such as pins, belt buckles, etc. between the child and the seat belt. This could cause injury in the event of an accident.
- Explain to your child how important it is to be properly secured and that the position of the belts must not be changed. They should not pull on the belts or open the buckles.
- Do not make any changes to the car seat, as this could compromise your child's safety.
- The car seat must not be damaged by moving parts in the car or by doors.
- Never leave your child alone in the child seat.
- Inform your passengers how to remove your child from the seat after an accident.
- After an accident, the entire child car seat must be replaced.

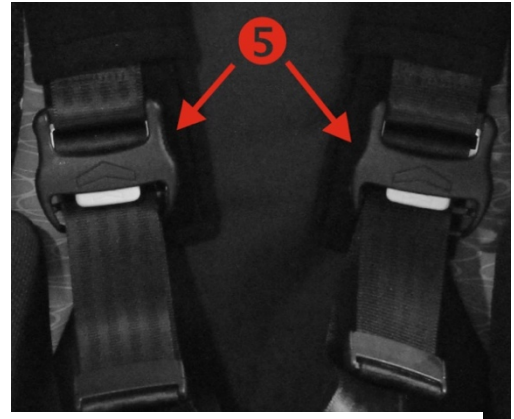
## 3 Handling of the basic model

### 3 Handling of the basic model

#### 3.1 Adjusting the 5-point harness

Place your child in the car seat and make sure that their pelvis is positioned as far back as possible. Now place the straps over the child's shoulders. If the straps are too short, press the gray button on the strap adjuster (5) to loosen the strap system.

Then insert the two metal tabs into the belt buckle until they click into place. Then tighten the belt system by pulling on the ends of the belt.



#### 3.2 Adjusting the headrest

Press the release button in the handle to move the headrest up or down. Make sure that the child's head never protrudes above the headrest!



#### 3.3 Adjusting the back angle

The backrest angle can be adjusted continuously and locked in any position. This ensures that the car seat is stable in every position. Open the two quick-release levers and move the backrest to the desired position. Then close the quick-release levers to fix the angle.



## 4 Use of optional accessories

### 4 Use of optional accessories

#### 4.1 Installation in the car – with ISOFIX

Have the technician demonstrate how to install the seat when you pick up and adjust the car seat.

The IPAI is permanently installed in your vehicle using the ISOFIX locking arms. Your child is then secured with the vehicle's 3-point seat belt.

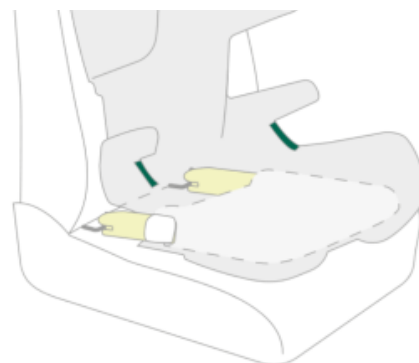
1. If your vehicle is not equipped with ISOFIX mounting points as standard, clip the two mounting points included with the seat onto the two ISOFIX mounting brackets in your vehicle with the recess facing upwards.

**TIP!** The ISOFIX mounting points are located between the seat and the backrest of the vehicle seat.

2. Move the headrest of the vehicle seat to its uppermost position.
3. Press and hold the ISOFIX adjustment knob (see image) and slide the ISOFIX locking arms out completely.

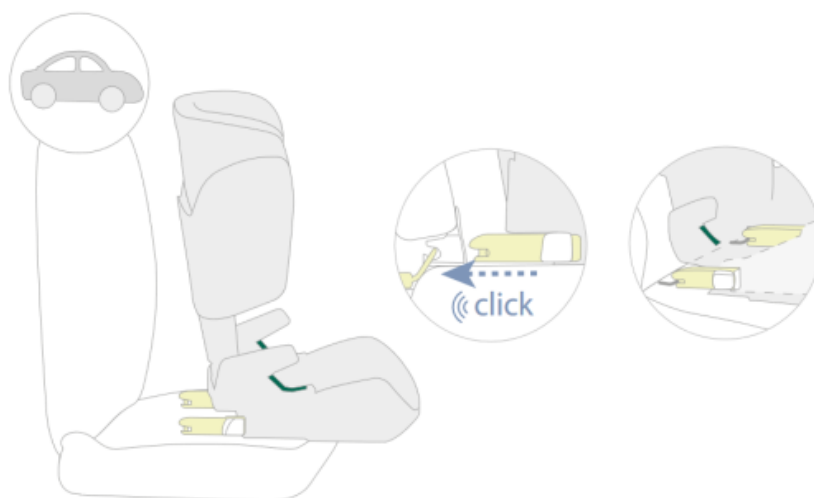
**Note!** If your seat is equipped with a seat depth adapter, extend the adapter to reach the adjustment knob (see page 19 for more information).

4. Press the lock button and the red release button on both sides of the seat against each other. This ensures that both hooks on the ISOFIX locking arms are open and ready for use.

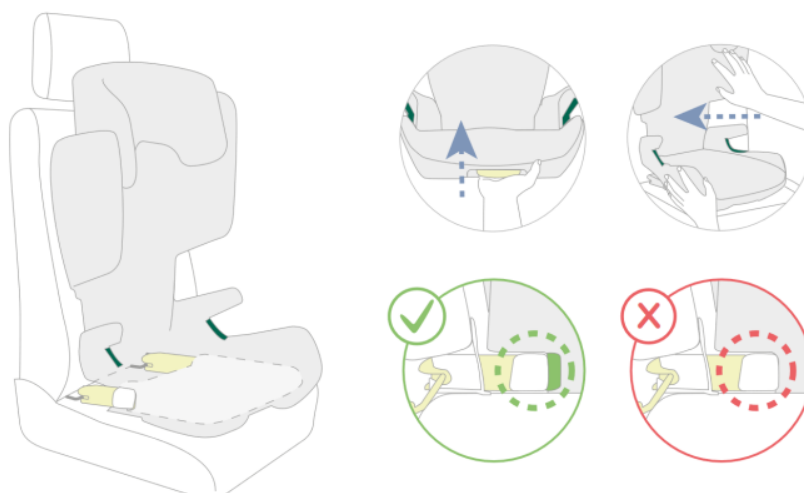


## 4 Use of optional accessories

5. Place the child seat in the direction of travel on an approved vehicle seat. Make sure that the backrest is flat against the backrest of the vehicle seat.
6. Position the two ISOFIX locking arms directly in front of the two insertion aids.
7. Push both ISOFIX locking arms into the guide rails until the ISOFIX locking arms click into place on both sides.



8. Hold down the ISOFIX adjustment button and slide the child seat as far back as possible.
9. Wiggle the child seat to ensure that it is securely fastened and check that the green area is visible on both locking arms.





## 4 Use of optional accessories

### 4.2 Support and safety cushions

Installation:

1. Ask for help with installing and adjusting the seat when it is delivered.
2. Place the support and safety cushion on the car seat after you have placed your child in the seat and fastened the seat belt.
3. Secure the padding with the Velcro straps provided, which are attached to the back of the car seat.
4. Your child's arms should rest on the table, resulting in an upright sitting position. This supports the upper body.
5. Be sure to avoid any toys that may be on the padding. Do not use any hard, solid, or sharp objects!



### 4.3 Chest pads

HERNIK GmbH is not permitted to modify the body of the IPAI (drilling, screwing). However, it was very important to us to offer lateral support for children with weak trunk muscles, so we opted for a fixation solution that provides sufficient stability and flexibility at the same time.

To change the position of the pad, it must first be carefully loosened by gently turning the Velcro fastener. The pad can then be repositioned as required.

**IMPORTANT:** For a stable hold, the pad should be pressed onto the back of the IPAI with high pressure while turning it back and forth. This ensures that the Velcro elements adhere more firmly!





## 4 Use of optional accessories

### 4.4 abduction wedge

1. The abduction wedge helps your child to maintain a certain distance between their knees. To loosen or tighten the 5-point harness, the wedge must be removed. Open the clamp and lift the wedge out.
2. The wedge should rest against the seat padding as shown in the illustration. The depth of the wedge can be adjusted. To do this, open the two hexagonal screws and move them under the seat.
3. The wedge should always be used while driving (if selected as an option), otherwise your child could be injured by the fastening.
4. The lever can be moved into a different position by pulling it forward slightly without moving the screw connection. Make sure that it is at the top and not in the way, as your child's calves could otherwise come into contact with it.



### 4.5

If the seat angle of the vehicle seat is insufficient, the seat angle of the car seat can be increased using the (extended) seat angle adjustment.

To do this, press the red ball (see illustration). Once the seat is in the desired position, the red ball can be locked in place by turning it.



## 4 Use of optional accessories

### 4.6

To make it easier to transfer your child into the vehicle every day, we recommend our swivel adapter, which allows the car seat to be rotated 90° outwards. For technical reasons, only ONE direction of rotation is possible. To change to the other direction at a later date, the car seat must be converted at our premises. We recommend using the ISOFIX adapters or the clamp bracket!

To rotate the seat, pull the handle upwards and move the seat at the same time. The optional footrest stops to prevent collisions with the front passenger seat and the B-pillar.

Pay attention to your child's legs when turning the seat!

After transferring, simply rotate the IPAI back to its original position. Listen for the "click" sound as the tongue clicks back into place.



## 4 Use of optional accessories

### 4.7 Seat depth adapter

Adjusting the seat depth adapter:

The seat depth adapter can be adjusted to the desired seat depth.

1. Loosen the 2 screws (1) on both sides of the car seat with an Allen key.
2. The seat depth adapter can now be moved to the desired position.
3. Tighten the 2 screws again.



## 5Warranty

### 5 Warranty

HERNIK products are developed and manufactured according to strict quality standards. In the unlikely event that you have cause for complaint, HERNIK GmbH provides a warranty in accordance with the terms of delivery:

- 24-month warranty on all fixed parts from the date of delivery.
- 12-month warranty on all moving parts from the date of delivery.

For parts not manufactured by HERNIK GmbH, the warranty conditions of the respective manufacturer (Römer-Britax Kindersicherheit GmbH) apply. The warranty is only valid if the device has been installed correctly and is used as intended.

The warranty is void if changes or improper repairs are made without prior consultation with the manufacturer. The warranty is void if a device is installed improperly.

Further claims, regardless of their legal basis, in particular claims for compensation for direct or indirect damage, are excluded.

## 6Marking

### 6 Marking

The following marking can be found on the back of the car seat:



**HERNIK**

Gewerbering 8  
83543 Rott am Inn  
Germany

---

**IPAI-MAX**

**UDI** 4260675480590  
4260675480606

---

**MD** **CE**



max. Gewicht: 50 kg  
Date: 08.07.2025  
SNR: I-MAX-2025-XXXX



**HERNIK**

Gewerbering 8  
83543 Rott am Inn  
Germany

---

**IPAI-MINI**

**UDI** 4260675480576  
4260675480583

---

**MD** **CE**



max. Gewicht: 36 kg  
Date: 08.07.2025  
SNR: IMINI-2025-XXXX

**Rückhalteeinrichtung für spezielle Anforderungen "S" (DE)**

Lesen Sie bitte vor Gebrauch die Bedienungsanleitung!

**Rückhalteeinrichtung für spezielle Anforderungen "S" (DE)**

Lesen Sie bitte vor Gebrauch die Bedienungsanleitung!



**HERNIK**

Specific Vehicle  
Booster Seat

**IPAI-MAX**

100 - 150 cm

**E<sub>57</sub>**

00\*0090 S

UN-Regulation  
No. 129/04



**HERNIK**

Specific Vehicle  
Booster Seat

**IPAI-MINI**

100 - 125 cm

**E<sub>57</sub>**

00\*0090 S

UN-Regulation  
No. 129/04

## 7 Maintenance & care

### 7 Maintenance & care

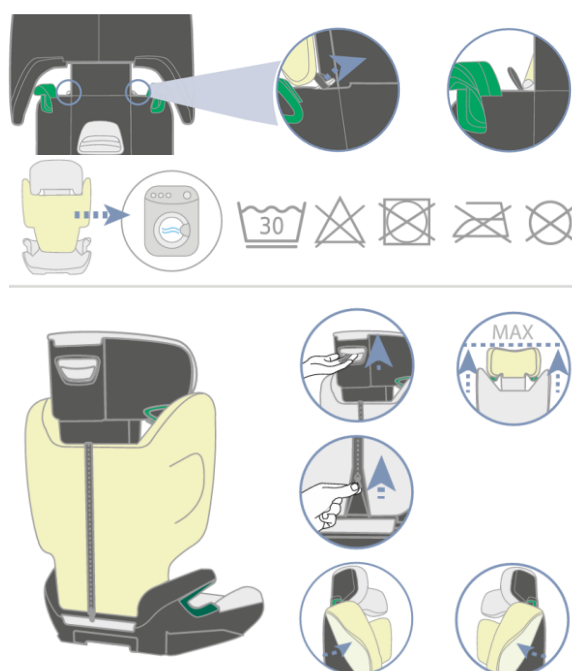
#### 7.1 Removing the cover

Please ensure that you only use original BRITAX-RÖMER or HERNIK replacement covers, as the seat cover is an integral part of the child seat and performs important functions for the proper functioning of the seat. Replacement covers are available from your specialist dealer.

The cover can be removed and washed in a washing machine on a delicate cycle (30°C) using a mild detergent. Please follow the instructions on the cover's care label. The plastic parts can be cleaned with water and soap. Do not use harsh cleaning agents (e.g., solvents).

**ATTENTION!** The child seat must not be used without the seat cover.

1. Move the headrest of the child seat to its highest position.
2. Unhook the hooks on the back of the backrest.
3. Pull off the upper part of the cover.
4. Hook the cover loops onto the bottom of the backrest.
5. Pull the cover off the seat cushion. Repeat the same procedure with the headrest cover.
6. Loosen the cover loops on the back of the headrest.
7. Hook the hooks onto the front of the backrest.
8. Remove the cover from the headrest.
9. The cover can now be washed.



## 8 Technical data:

### 8 Technical data:

	IPAI-MAX OHNE Polsterinlet	IPAI-MAX MIT Polsterinlet		IPAI-MINI
SITZBREITE (Becken)	32 cm	26 cm	SITZBREITE (Becken)	25 cm
SITZBREITE (Knie)	38 cm	38 cm	SITZBREITE (Knie)	31 cm
SITZTIEFE	33 cm	30 cm	SITZTIEFE	26 cm
RÜCKENHÖHE	41 - 56 cm	38 - 53 cm	RÜCKENHÖHE	30 - 43 cm
SCHEITELHÖHE	59 - 76 cm	56 - 73 cm	SCHEITELHÖHE	52 - 65 cm
Höhe Thoraxpelotten	24 - 36 cm	21 - 33 cm	Höhe Thoraxpelotten	17 - 31 cm
Abstand Thoraxpelotten	15 - 28 cm		Abstand Thoraxpelotten	14 - 28 cm
Rückenwinkel	80° - 120°		Rückenwinkel	90° - 120°
Gesamthöhe	71 - 88 cm		Gesamthöhe	66 - 89 cm
Gesamtbreite	44 cm		Gesamtbreite	44 cm
Gesamttiefe	44 cm		Gesamttiefe	44 cm
Gewicht	ab 8,0 kg		Gewicht	ab 8 kg
max. Gewicht Kind	50 kg		max. Gewicht Kind	36 kg

\*Some specifications may vary depending on accessories

#### Standard equipment:

- 5-point harness with padded buckle pad (height-adjustable!) and belt protectors
- Height-adjustable headrest
- Comfortable backrest and headrest padding with removable cover (moldable foam!)
- Three-piece basic cover removable and washable at 30°C

## 9Material list:

### 9 Material list:

The following materials are used:

- Plastic (seat unit and lower frame)
- Steel (accessories)
- Aluminum (thorax pads)
- Polyester (webbing)
- Foam-laminated mesh fabric, anthracite (cover)
- Foam density



## notes

## notes



**HERNIK GmbH**  
**Gewerbering 8**  
**83543 Rott am Inn • Germany**

 **+49 8039-9093930** •  **+49 8039-90939319**  
 **info@hernik.de** •  **www.hernik.de**

- Seite 12 -